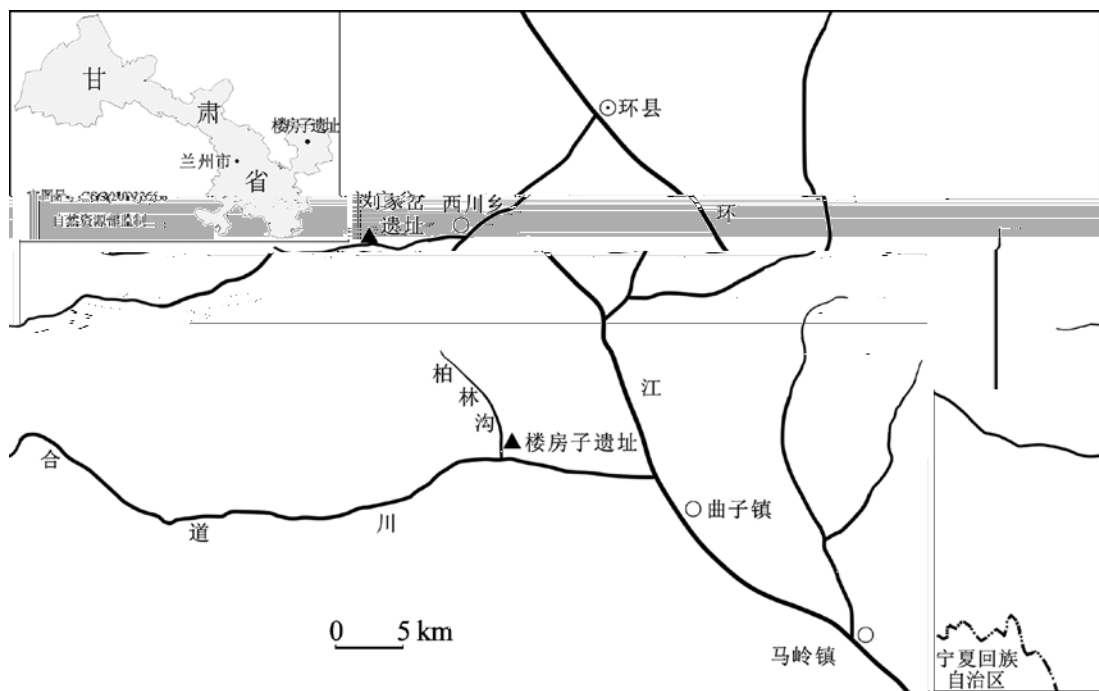


---

*1. Institute of History, Beijing Normal University, Beijing 100875; 2. Institute of History and Culture, Northwest Normal University, Lanzhou 730070; 3. Gansu Provincial Institute of Cultural Relics and Archaeology, Lanzhou 730000; 4. State Key Laboratory of Palaeobiology and Stratigraphy (Nanjing Institute of Geology and Palaeontology, CAS), Nanjing 210008; 5. Institute of Scientific Archaeology, Fudan University, Shanghai 200433*

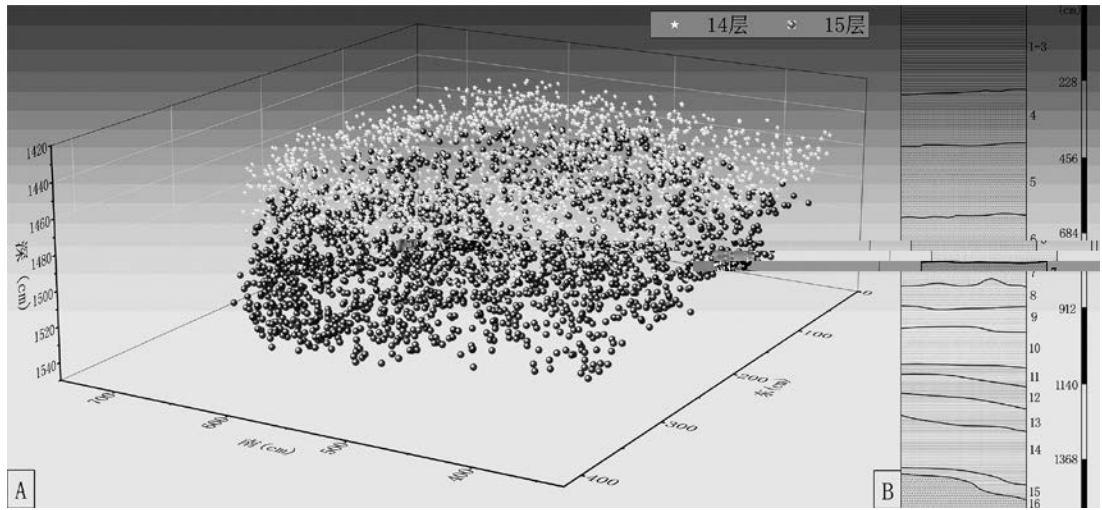
mainly quartz sandstone and siliceous limestone. The lithic assemblage includes cores, flakes, tools, chunks etc. The principle faking technique was direct hard-hammer percussion. Most

---



%

36°20'47" N 107°20'54" E



&

#

$n =$   $n =$   $n =$   $n =$   
 $n =$   $n =$   $n =$   $n =$   
 $n =$   $n =$   $n =$   $n =$

---

$n$

---

---

---

$n=$                        $n=$                        $n=$                        $n=$   
 $n=$                        $n=$                        $n=$

$n=$                        $n=$                        $n=$   
 $n=$                        $n=$                        $n=$   
 $n=$

n=



Fig.3 Cores, flakes, stone hammers and choppers excavated from the lower cultural layer of Loufangzi site

( ) , ( ) , ( ) , ( )

Tab.4 Characteristics of flakes from lower cultural layer

<i>n</i>					
<i>n</i>					
<i>n</i>					
<i>n</i>					

*n*=

*n*=

*n*=

*n*=

*n*=

*n*=



		$n =$		$n =$
$n =$		$n =$	$n =$	$n =$
$n =$		$n =$		$n =$
	$n =$		$n =$	$n =$

---

---

---

---

80°

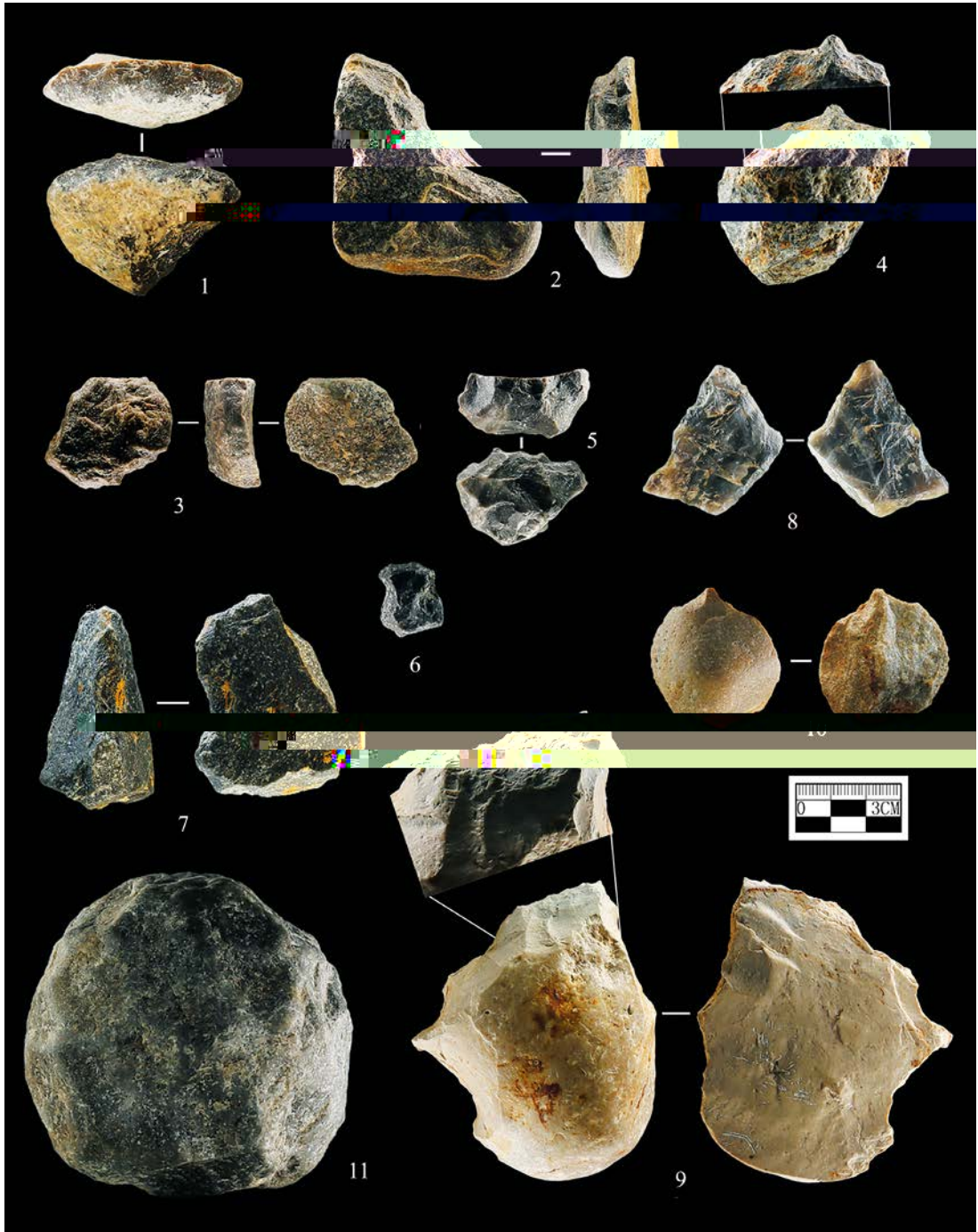
---

---

---

---





ž

